



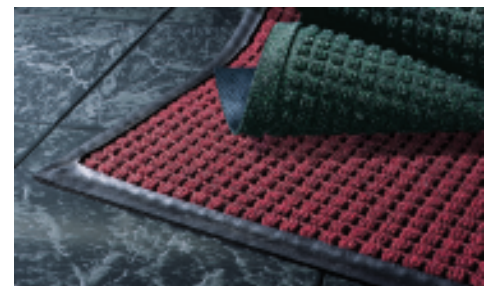
GD Waterhog Classic & Diamond

Entrance Mats • Indoor/Outdoor

WaterHog Classic mats are durable, stain-resistant mats with a unique bi-level design that traps dirt and moisture, keeping your floors clean, dry, and safe.



- Clean & Dry Raised nubs remove dirt and moisture from shoes and trap it below foot level.
- Eco-Friendly Solution-Dyed PET carpet made from 100% recycled plastic bottles. Nitril Rubber backing is PVC-Free.
- Waterdam Borders -The borders are designed to hold water and dirt on the mat keeping it off carpets and floors.
- Durable -Reinforced rubber nubs prevent pile from crushing and extend the performance life of the mat.
- Fade & Stain Resistant -Solution-dyed PET fabric is resistant to staining, dries quickly, and will not fade or rot.
- Easy to Clean and Maintain - Simply use commercial cleaning machines, vacuum, high pressure cleaner or steam clean.



GDmatsEU
www.gdmats.eu
gdmats@gdmats.eu

GD - Waterhog Classic & Diamond

Entrance Mats • Indoor/Outdoor



Standard Sizes (cm)

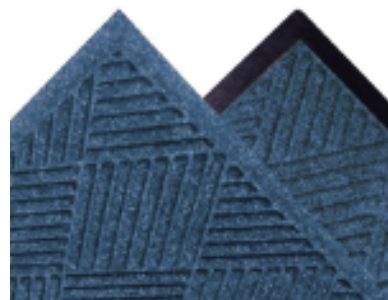
60x90	115x180*
90x150	180x250*

Size Tolerance: +/- 2%

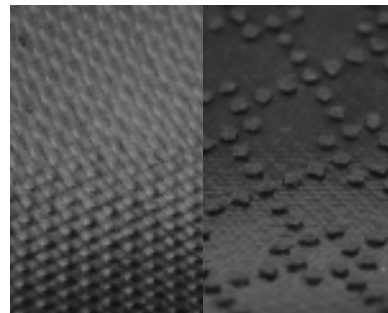
*Camel only available in 60x90 and 90x150



Raised nubs



Fashion or rubber border

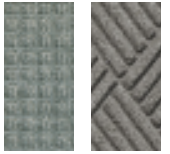


Smooth or claw backing

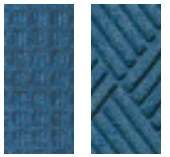
#54
Charcoal



#57
Medium
Grey



#56
Medium
Blue



#50
Camel



Specifications

Carpet: 100% Recycled Solution Dyed P.E.T.

Weight: 820 gr/m²

Rubber Backing: 100% Nitrile Rubber

Thickness: 3.63 mm - Border
1.98 mm - Body

Total Weight: 2.8 kg/m²

Border Options: Fashion and rubber border



GDmatsEU
www.gdmats.eu
gdmats@gdmats.eu