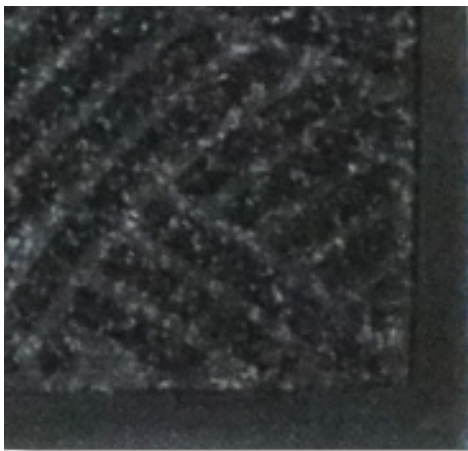


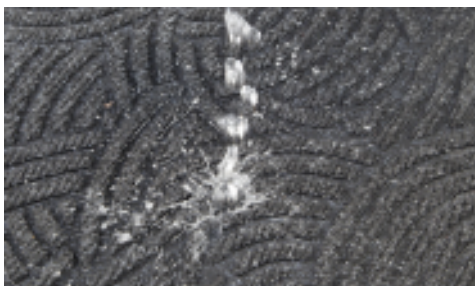
# GD-Waterhog Plus

## Entrance Mats • Indoor/Outdoor

WaterHog Plus mats are durable, stain-resistant mats with a unique bi-level design that traps dirt and moisture, keeping your floors clean, dry, and safe.



- Reinforced face Nubs: Face Nubs are reinforced with rubber to resist crushing, maintaining high performance and extending product life.
- “Water Dam” border: The border is designed to hold water and dirt on the mat keeping off carpets and floors. The unique raised rubber border allows Waterhog® Plus mats to hold up to 4 liters of water per square meter.
- Raised Nub surface: Removes and traps dirt and moisture, holding it on the mat below shoe level so they are not tracked onto floors.
- Indoor/Outdoor: Durable anti-static P.E.T. face suitable for indoor or outdoor use. P.E.T. fiber system dries quickly.
- ColorfastSolution dyed for excellent light fastness.



# GD - Waterhog Plus

Entrance Mats • Indoor/Outdoor



Waterdam



Raised nubs



Rubber reinforced textile

Rubber border

## Standard Sizes (cm)

|         |         |
|---------|---------|
| 60x90*  | 115x175 |
| 90x120  | 115x240 |
| 90x150* | 175x360 |
| 90x295  |         |

Size Tolerance: +/- 2%

\*black smoke is in stock in these sizes

## Specifications

Carpet Fiber: Solution Dyed P.E.T.

Weight: 800 gr/m<sup>2</sup>

Nub Height: 0.64 cm

Rubber Backing: 100% Nitrile Rubber

Thickness: 4.5 mm - Border  
2.3 mm - Body

Durometer: 65

Tensile: 1800

Total Weight: 4.0 kg/m<sup>2</sup>

Only available with rubber border

Laundryable



GDmatsEU  
www.gdmats.eu  
gdmats@gdmats.eu